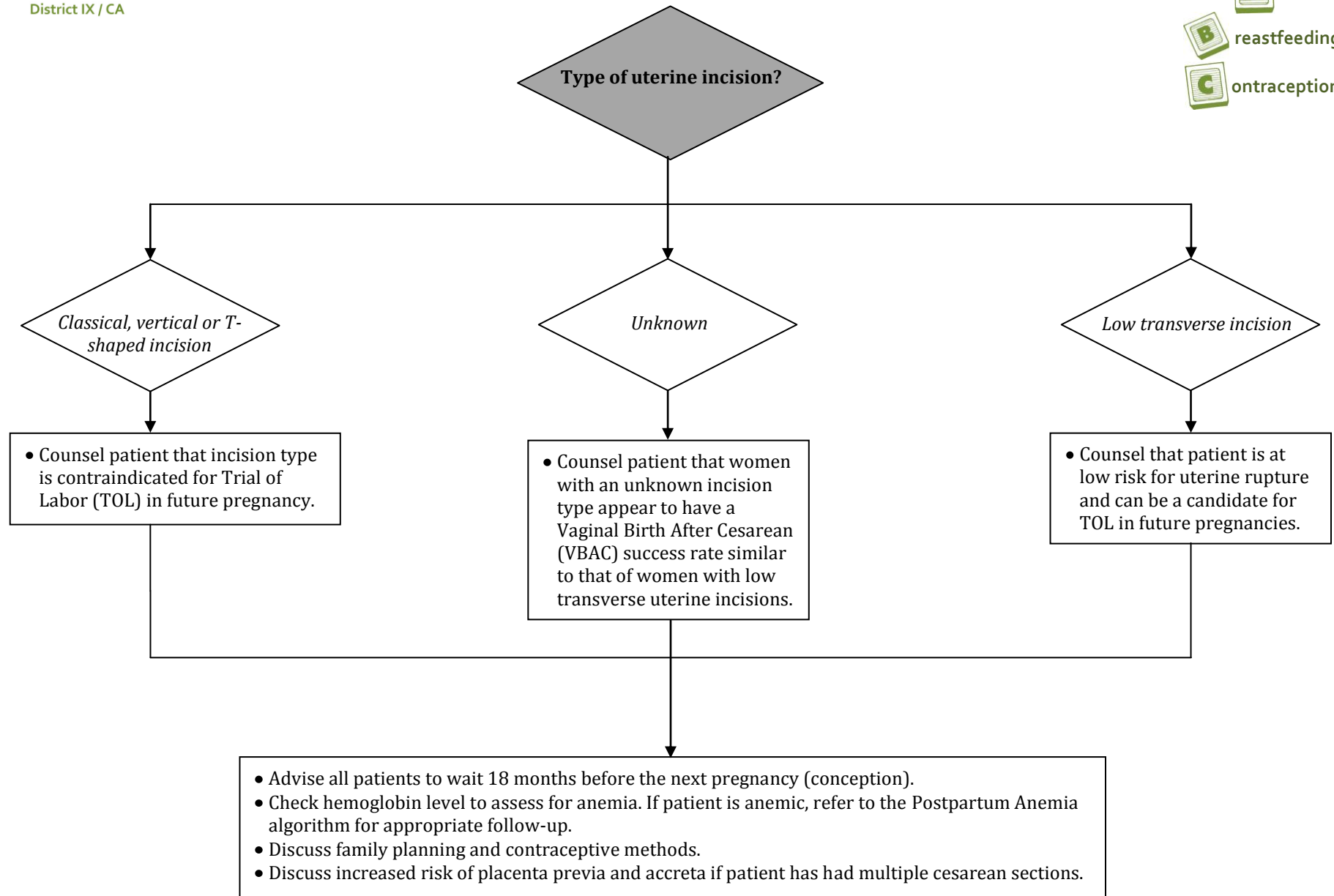


Postpartum Visit Algorithm: Prior Cesarean Section

Remember the ABCs:



Postpartum Visit Algorithm: Prior Cesarean Section

EVERY DAY

Checklist for Healthy Women

Exercise – 30 minutes a day, 5 days a week

Vitamin – 400 micrograms of Folic Acid per day

Educate yourself about medicines and chemicals that can cause birth defects

Reproductive life planning – set your personal goals for birth control and future children

Yearly doctor visits to discuss physical and mental wellness

Diet – Vegetables, fruits, and whole grains daily

Avoid tobacco, drugs, and alcohol

Your partner, friends, and family should be sources of support

Content from everywomancalifornia.org used with permission from the Preconception Health Council of California.

References:

American College of Obstetricians and Gynecologists. ACOG Practice Bulletin No. 115: Vaginal birth after previous cesarean delivery. *Obstetrics & Gynecology* 2010;116(2 Part 1):450-63.

Coughlan C, Kearney R, Turner M. What are the implications for the next delivery in primigravidae who have an elective caesarean section for breech presentation? *British Journal of Obstetrics and Gynecology* 2002;109:624-6.

Landon M. Vaginal birth after cesarean delivery. *Clinics in Perinatology* 2008;35:491-504.

Shipp TD, Zelop C, Repke JT, et al. The association of maternal age and symptomatic uterine rupture during a trial of labor after prior cesarean delivery. *Obstetrics & Gynecology* 2002;99(4):585-8.

Stubblefield PG, Coonrod DV, Reddy UM, et al. The clinical content of preconception care: reproductive history. *American Journal of Obstetrics and Gynecology* 2008;199(6B):S373-83.

